

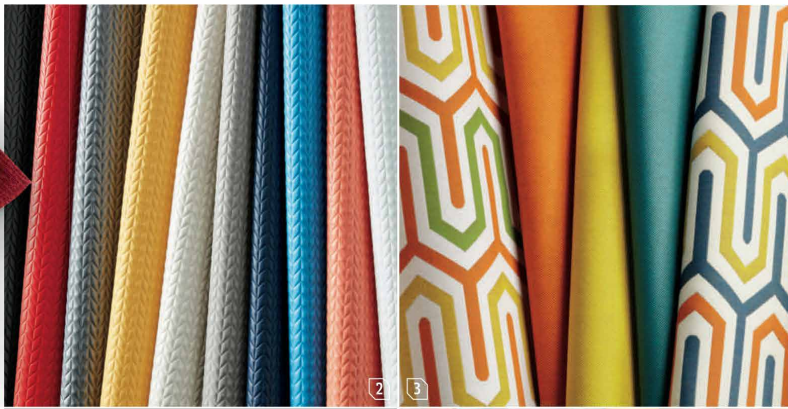
# INTERIOR DESIGN

A large, ornate, multi-colored ceramic bowl filled with water, with steam rising from it, set against a dark background. The bowl has a complex, swirling pattern of colors including red, orange, yellow, and green. The water is splashing, and steam is rising from the surface. The background is dark and textured.

*smoking hot!*  
spring market tabloid



1



2

3

1. By The Yard polyolefin by Bella-Dura. bella-dura.com. **circle 431**

2. Moto polyester-cotton by Carnegie. carnegiefabrics.com. **circle 432**

3. Bali acrylic-polyester and Fiji acrylic by Arc-Com. arc-com.com. **circle 433**

4. Ranger leather by Edelman Leather. edelmanleather.com. **circle 434**

5. Bute wool by Designtex. designtex.com. **circle 435**

6. Suzanne Tick's Fundamentals polyester by Luum Textiles. luumtextiles.com. **circle 436**

## brighten up

Keep it lively with primary hues

7. Alpha polyolefin by LoomSource. memosamples.com. **circle 437**

8. Raf Simons's Vidar 3 wool-polyamide by Kvadrat. kvadrat.dk. **circle 438** ➔



8



4



5



7

6

